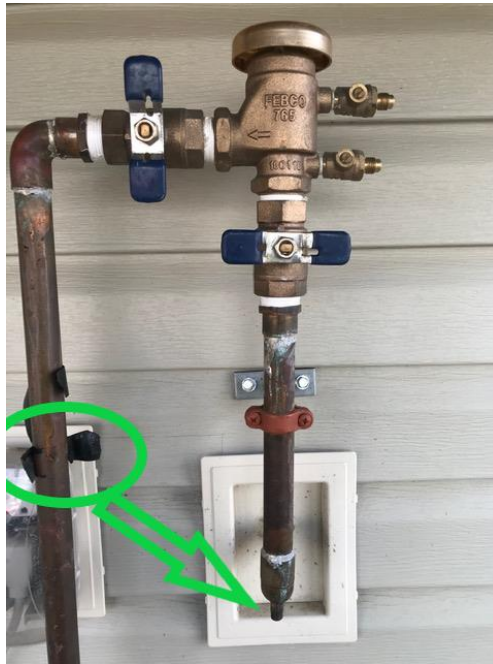




Irrigation start up directions

Step 1

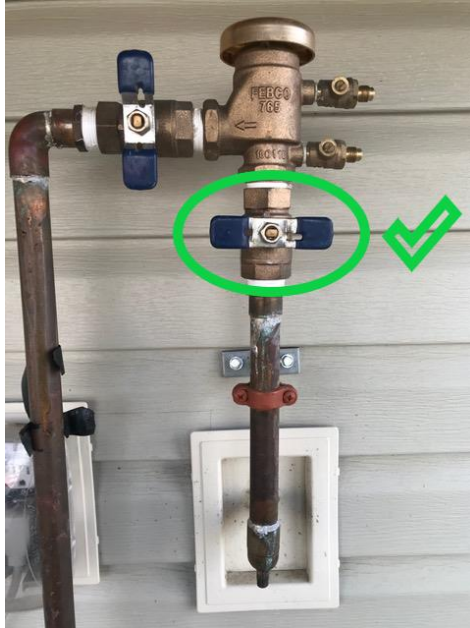


Located outside taped onto the back-flow you will find the brass drain cap that will need to be screwed onto the bottom of the back flow where the green arrow is pointing at in the picture above.



This is an image of the caps needed for step 1

Step 2

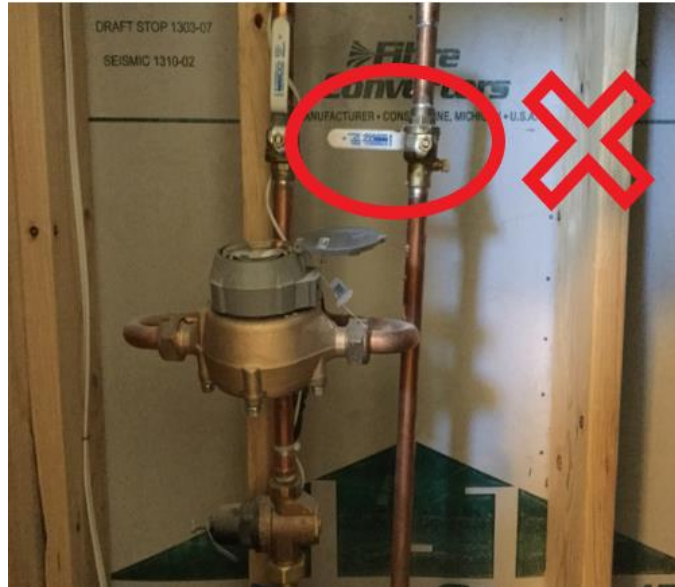


Then you will need to turn the backflow ball valve to the off position shown in the picture above. This will complete what needs to be done to the back flow outside.

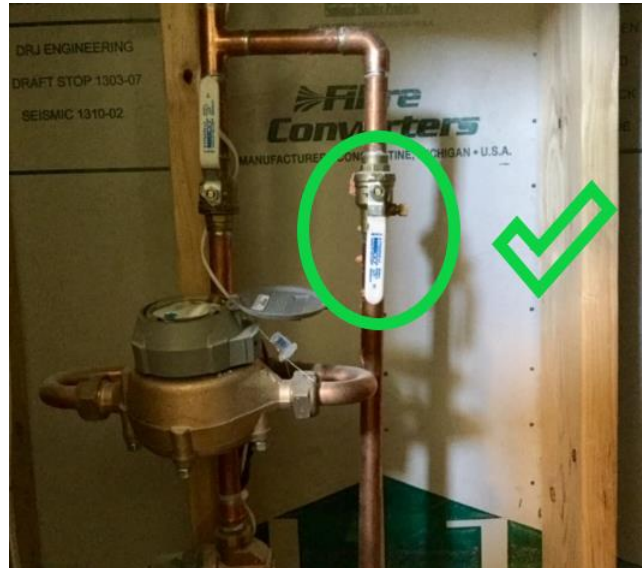
Step 3

Next you will need to go inside and check to your water shut off valve for your house. This is located in a little closet inside of the closet closest to the front door (Carriage homes)

Or located in the basement (Bungalows)



In the picture above you will see what the shut off looks like. The shut off system has a valve on it that is dedicated to your irrigation. You will notice the correct valve also has a bleeder cap on the side just like the backflow that is outside.



Turn that valve to the on position parallel to the pipe as seen in the picture above. This will complete everything you need to do. Brightview will handle the rest of the turn on process.

Thank you very much for your corporation!

